

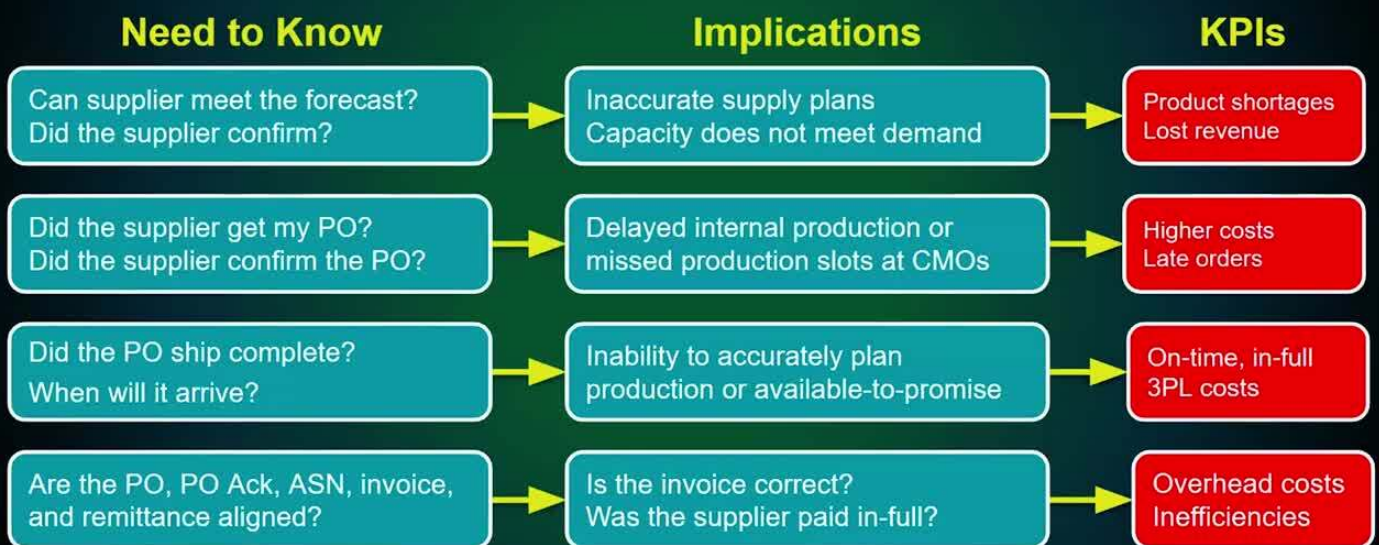
## RESOURCES

Home

# Why It's Important to Integrate with All of Your Suppliers Now



## What Do You Need to Know From Suppliers to Achieve Manufacturing KPIs?



© 2024 TraceLink, Inc. All rights reserved.

8

tracelink.

Nearly 44% of all pharmaceutical revenues depend on contract manufacturers and other suppliers. But there isn't nearly enough real-time integration, visibility, and collaboration between manufacturers and their suppliers. TraceLink MINT solves this problem.

In this video, Bharath Sundararaman, General Manager of Supply Network Orchestration at TraceLink, explains that TraceLink MINT delivers real-time answers to important questions, such as:

- Can my supplier meet the forecast?
- Did the supplier confirm the PO?
- Did the PO ship in full?

Watch the video to learn why integration with suppliers is critical and then **contact us** to schedule your personalized TraceLink MINT demo today.

**Video**

**MINT for Direct Supply**

**Multienterprise Information Network Tower (MINT)**

**Supply Chain Collaboration**

Want to learn more? Contact us to schedule a TraceLink MINT demo!

Fill out the form to contact us now.