



RESOURCES

Home
Resources
Resource Center

Digitalize Your End-to-End Supply Chain with TraceLink Multienterprise Information Network Tower



Achieve real-time supply chain intelligence through cost-effective B2B network integration with 100% of your contract manufacturers, suppliers, 3PLs, carriers, and customers.

Business leaders across the healthcare and life sciences industries are actively seeking to **increase supply chain intelligence** by improving their visibility into purchase orders, inventory, production forecasts, demand signals, and more. By increasing real-time B2B integration to manage these transactions and orchestrate the flow of products across their supply chains, these leaders will:

- Reduce supply risk.
- Reduce product and supply chain costs.
- Improve efficiency across manufacturing and logistics operations.
- Improve product availability and customer service levels.

Multienterprise Information Network Tower (MINT) uses the proven TraceLink network and its powerful Integrate-Once, Interoperate with Everyone™ capability to enable integration with 100% of your supply chain partners at a fraction of the cost and time of alternative methods like EDI or point-to-point models. A single connection to the TraceLink network enables the real-time

exchange of purchase orders, invoices, advance ship notices (ASNs), production forecasts, and most other common business transactions. **Read our new solution brief to learn more!** With TraceLink MINT, your organization can:

- **Modernize Partner Integration:** Reduce the costs to run and maintain EDI, portals, and expensive point-to-point integrations.
- **Increase Visibility and Collaboration:** Real-time data exchange ensures you and your partners are aligned on goals and can quickly respond to supply chain disruptions.
- **Improve ERP Performance:** Real-time information sourced from your partners ensures ERP is operating with the most current and accurate data.
- **Improve Planning:** Real-time order, inventory, and shipment updates from your partners ensures plans are more accurate.
- **Ensure Lowest Total Cost of Ownership with the Industry's Simplest Pricing Model:** Our unique pricing model is based on the number of trading partners using MINT and the number of transaction types being exchanged. There are no unpredictable usage fees based on data volumes processed or a percentage of the value of the business transactions. There are no fees for your partners to participate.

Read the solution brief to see the real-world use cases and additional benefits of TraceLink MINT—then **contact us to schedule a meeting and get started today.**

Solution Brief **Multienterprise Information Network Tower (MINT)**

Schedule a meeting with TraceLink to learn more about Multienterprise Information Network Tower!

Fill out the form to contact us now

Related Content



External Manufacturing Best Practices: How to Improve Visibility and Increase Collaboration with 100% of Your CMOs

Learn how TraceLink Multienterprise Information Network Tower (MINT) enables real-time collaboration with 100% of your CMOs and helps you improve visibility into external manufacturing processes.

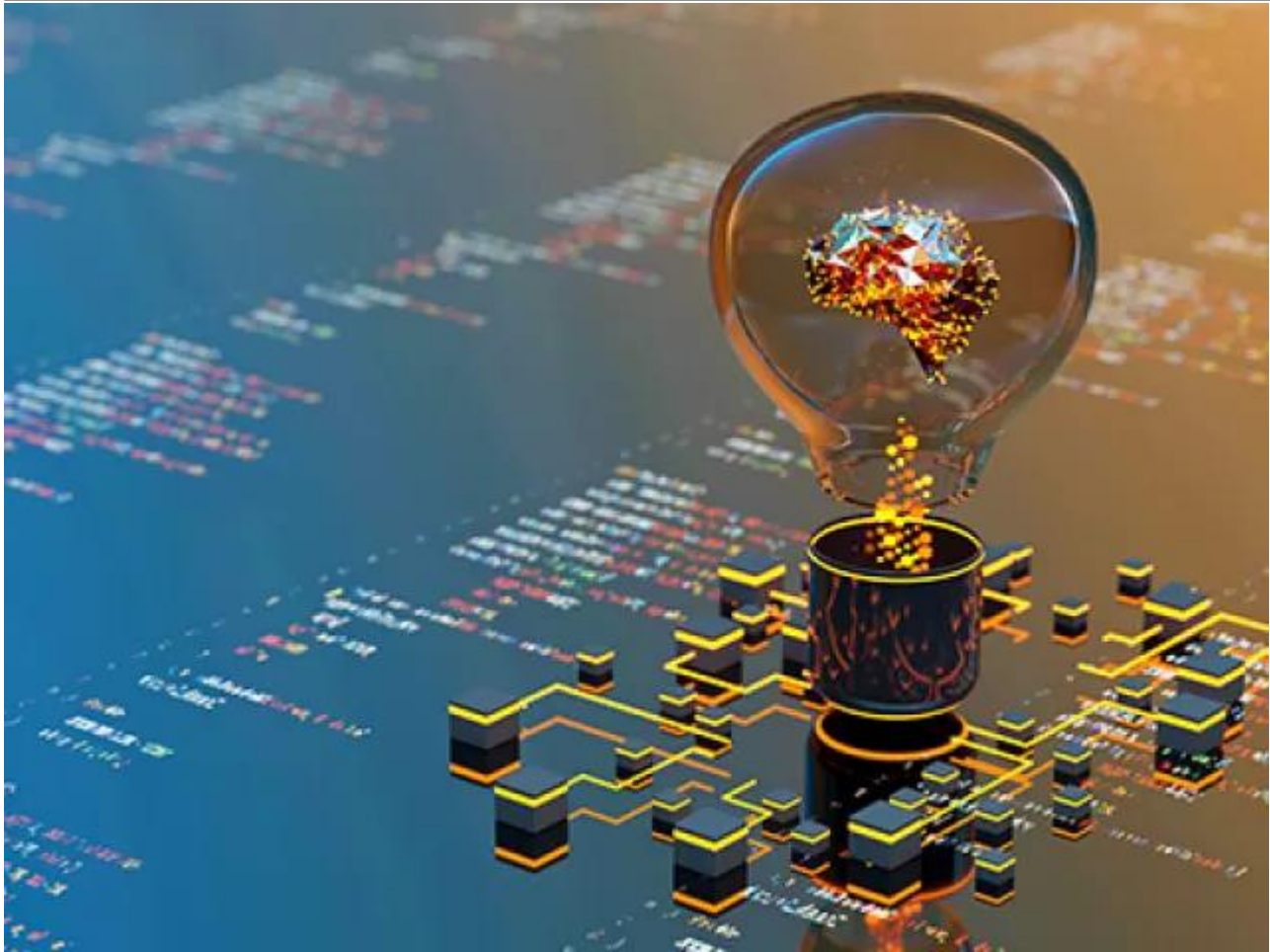
[View More](#)



Simple, Fast, and Cost Effective: Proven Supply Network Integration to Exchange Data with 100% of Your Suppliers and Customers

You can start with MINT immediately by sending and receiving purchase orders through the TraceLink network with a partner of your choice. Fill out the form on this page to register for this on-demand webinar today.

[View More](#)



TraceLink MINT Wins 2023 Pharma Innovation Award: 100% End-to-End Supply Chain Digitalization is Now Within Reach

100% End-to-End Supply Chain Digitalization is Now Possible with Proven Network Orchestration Capability

[View More](#)