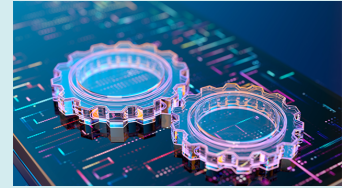




RESOURCES

Home
Resources
Resource Center

Supply Chain Transformation Drives Operational Excellence at Santen



Transforming CMO relationships is a top priority at Santen Pharmaceutical, according to Frank Binder, the company's Global Head of Supply Chain Management. Watch this quick video clip and then **contact us** to learn how TraceLink enables fast and cost-effective, real-time integration and information exchange with 100% of your CMOs.

```
.heading { color: #000; border-bottom: 2px solid #E5F6F8; padding: 20px 15px; cursor: pointer; margin:0; } .active{ background: #E5F6F8; } .heading:nth-last-child(2){ border-bottom:2px solid #E5F6F8; } .heading:hover { background: #E5F6F8; border-radius: 0; } .heading:first-child { border-top:2px solid #E5F6F8; } .heading::before { content: ""; vertical-align: middle; display: inline-block; border-top: 10px solid #003D4C; border-left: 7px solid transparent; border-right: 7px solid transparent; transform: rotate(-90deg); transition: all 0.5s; margin-top: -3px; margin-right:15px; } .active.heading::before { transform: rotate(0deg); } .not-active.heading::before { transform: rotate(-90deg); } .contents { display: none; background: transparent; padding:20px; border: 2px solid #E5F6F8; margin:0 !important; color:#252525; } .contents p{ margin-bottom: 0.7rem !important; color:#252525; }
```

Transcript

Frank Binder: Digital transformation with external manufacturing partners is really a key driver of our operational excellence and operational efficiency. We are really spending a lot of time creating these Excel sheets, sending them back, sending them, receiving them back, discussing the changes, and so on—placing orders in a semi-manual way, tracking the status of orders.

This is something we expect to be performing much better in the future. We expect to have much faster, basically real-time exchange of information of the status of an order, being able to have full transparency, but also cutting down on the cycle times, because all this receiving, uploading in a system, downloading from a system, sending to the partner, that takes a lot of time.

We really expect to be able to cut the planning cycle with a third-party also significantly by speeding things up.

Video **Multienterprise Information Network Tower (MINT)**

Integrate with 100% of your CMOs. Meet with TraceLink to learn more.
Fill out the form to contact us now.

Related Content



Better Business Decisions, Lower Costs, Greater Agility: Inside Santen's Journey to Supply Chain Transformation

Take a deep dive into the supply chain transformation journey at Santen Pharmaceutical with Frank Binder, the company's Global Head of Supply Chain Management. Watch the video now!

[View More](#)



From Spreadsheets to Seamless Digital Communication at Santen

For Santen, achieving real-time digital integration with suppliers is a high priority. Watch the video to learn more.

[View More](#)



Santen Drives Smarter Business Decisions Through Digital Supply Chain Transformation

For Santen, digital transformation is about making smarter decisions. Watch the video to learn more.

[View More](#)



Santen's Frank Binder Discusses the Power of Real-Time Integration with 100% of Your CMOs

Enabling real-time exchange of business transactions with CMOs is critical to Santen's digital transformation plan. Watch the video.

[View More](#)



Revolutionizing the Pharma Supply Chain: How TraceLink Fuels AI by Enabling Cost-Effective Integration with 100% of Your Partners

Bharath Sundararaman announces his promotion to General Manager of the TraceLink's Supply Network Orchestration team as the company introduces MINT, a faster, easier way to integrate with all of your supply chain partners.

[View More](#)